

4Sight2

Calibration and Asset Management Software

4Sight2 is the next generation of calibration and management software that provides full visibility of all your available assets, instruments, and resources that affect the maintenance, process efficiency and regulatory compliance of your site.

Delivered in an easy to use simple layout that is highly flexible with functionality for managers to plan, review, and adapt the calibration maintenance schedule. Enabling you to improve overall efficiency to calibrate and maintain site instrumentation, using manual, predefined, and automated procedures and routines.

4Sight2 runs from your Google Chrome web browser on any PC or tablet making it available anywhere, anytime over the internet. A secure login provision enables access to results in a mobile paperless solution for automating field activities ensuring the highest quality and integrity of calibration data.

Calibration management with 4Sight2 is smart, scalable, and easy to use from a single user to a global multi-site operation.

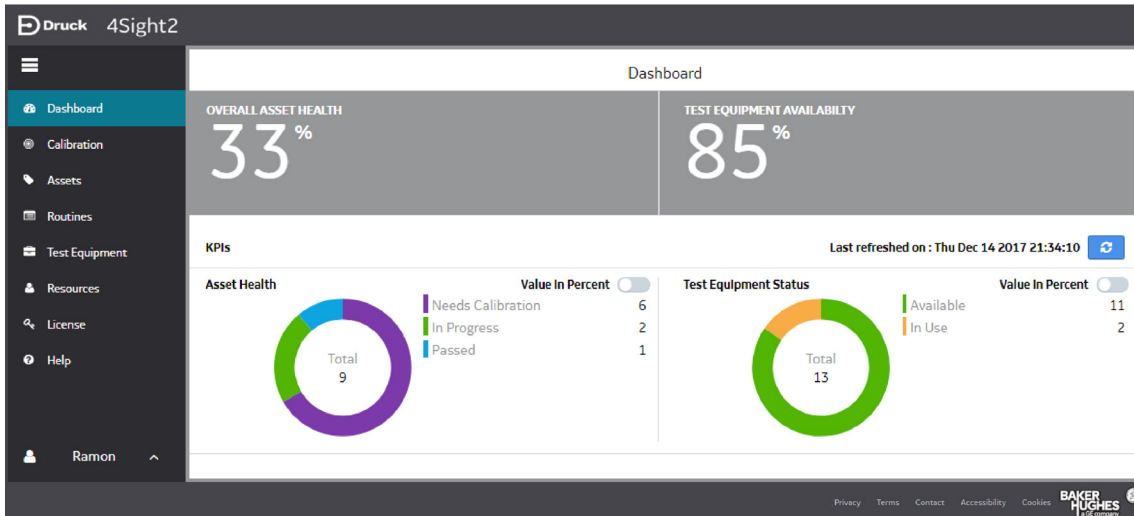


Features

- Supports European language; Dutch, French, German, Italian, Portuguese and Spanish
- Perform Automated Calibrations using Druck DPI611, DPI612, DPI620G and DPI620G-IS and Druck PACE pressure controllers
- Automates processes
- Automated calibration certificate generation
- Improve process efficiency and quality of data
- Easy to use functionality
- Easy access to Audit trail and asset history
- Schedule calibrations and prevent downtime
- Define and control calibration routines and calibration procedures per plant and location
- Full visibility of your assets, instruments, and resources
- Available anywhere , anytime via the Internet
- Scalable from single use to global multi site operation

Compliant Asset Management Software

4Sight2 ensures data integrity, improves information flow, automates processes to deliver efficient calibration management that also enables data driven strategic planning.



An intuitive User Interface and smart tables enable fast search and filter options, enabling easy access to Asset and Calibration data.

ASSETS 10 Items in Work List

ASSET RANGES

Location	Tag#	Device	Range	DeviceType	Priority	Cal Status	State	Due Date
Pressure Test	2.9 - Pressure - Observed	2.9 - 02BG010000bs Device	2.9 - 02BG010000bs	Pressure	High	In Progress	Calibrated	14/05/2017
Pressure Test	2.3 - Pressure - mA	2.3 01000mB 0420mA	2.3 01000mB 0420mA	Pressure	Medium	Needs Calibration	Ready	03/12/2017
Switch	3.4 Pressure - Switch	3.4 02NBGRSvNC Device	3.4 - 02BGRSvNC Device	Pressure	High	Failed	Ready	06/12/2017
Sharman Building	F10	F10 Test	F10 Test Range 1	Pressure	Low	Needs Calibration	Ready	06/12/2017
Sharman Building	F1	Water Pressure	Water Pressure Low Range	Pressure	Medium	Needs Calibration	Ready	06/12/2017
Sharman Building	F10	F10 Test	F10 Test Range 2	Pressure	Low	Needs Calibration	Ready	06/12/2017
Sharman Building	F1	Water Pressure	Water Pressure	Pressure	Medium	Needs Calibration	Ready	06/12/2017
Sharman Building	F10	F10 Test	F10 Test Range 3	Pressure	Low	Needs Calibration	Ready	06/12/2017
Sharman Building	F3	Compressor Output	Secondary Output	Pressure	Medium	Failed	Ready	07/12/2017
Sharman Building	F3	Compressor Output	Auxiliary Output	Pressure	Medium	Needs Calibration	Ready	07/12/2017

Rows per page: 10 | 21:30 of 75 | 1 2 3 4 5 6 7 8 >

Installation Solution

4Sight2 can be installed as an Intranet Server based solution, with secured web access for multiple users and locations. The solution has a low investment cost as application installation is only required on one PC used as a server, with reduced IT support costs through single site upgrade management and database backup.



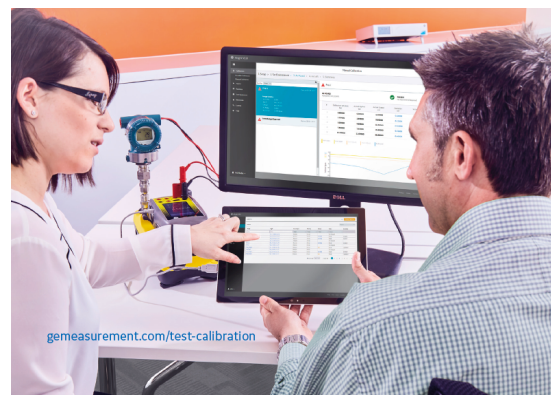
Audit-ready



Mobile paperless automated field calibrations



Available anywhere, anytime



Planning and Scheduling

4Sight2 provides automated planning to reduce administration and management. Advanced search features enable technicians to view what is important to them, i.e. work due/overdue. Clear work orders ensure only the current and required duties are listed and all required information is captured automatically.

ADVANCED SEARCH

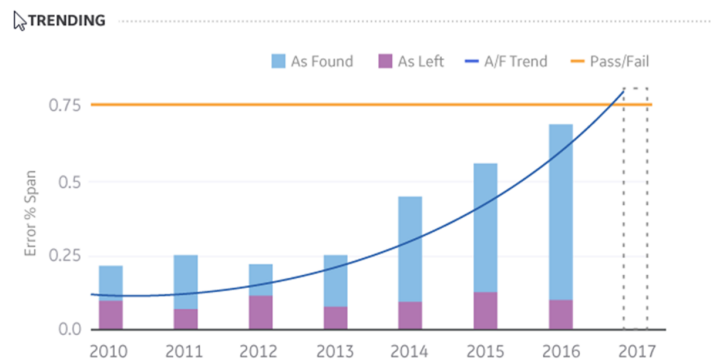
Assign Technician: Assign Approver:

Selected (0)	Range	Tag#	Location	Assigned To	Due Date	Priority	Status	Allocated List	Approver
<input type="checkbox"/>	<input type="text" value="Filter"/>	<input type="text" value="Filter"/>	<input type="text" value="Filter"/>	<input type="text" value="Select"/>		<input type="text" value="Select"/>	<input type="text" value="Select"/>	<input type="text" value="Select"/>	<input type="text" value="Select"/>
<input type="checkbox"/>	Range 0 - 3.5 BarG	TAG 001	Floor 1	Tech1	25/08/2017	Critical	Past Calibration Date	Portable	Ramon
<input type="checkbox"/>	Range 0 to 4 BarG	TAG 003	Floor 2	Ramo1	28/09/2017	Medium	On Time		Ramon
<input type="checkbox"/>	Range 0 to 4 BarG	TAG 002	Floor 1	Ramo1	01/09/2017	High	Due		Ramon
<input type="checkbox"/>	Range 0 - 3.5 BarG	TAG 004	Floor 2	Tech1	28/07/2017	High	Overdue		Ramon

Rows per page: 1-4 of 4

Historical Trending

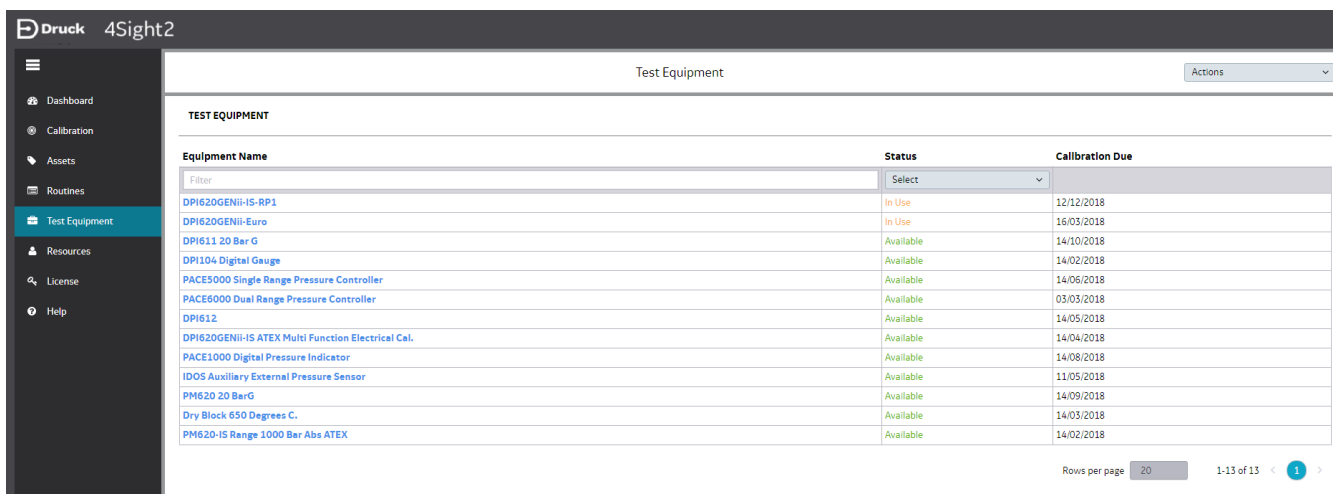
4Sight2 has a trending module which provides visibility to see your assets performance over time enabling you to make informed decisions on calibrations and preventative maintenance, from the planning and resource allocation stages through to data capture and post work assessment/reporting. Comprehensive filtering and assigned user rights allow a single system to be used over multiple sites. Providing supervisors and technicians visibility of all information relating to their site or sub-location. Senior managers can view and compare performance over all sites from a centralized database reducing time to manage and collate performance reports, whilst also ensuring the Historical Trending of asset performance to be monitored over time based on 'As Left' and 'As Found' results. This powerful tool is the key to improving efficiency and audit readiness, guaranteeing all sites follow the same standardized procedures.



- Predict failures
- Visibility of asset performance overtime ensures audit readiness
- Plan preventative maintenance
- Determine cost effective and reliable assets
- Extend calibration intervals reducing maintenance costs
- Process optimization
- Analyze instrument performance

Interval Analysis

The unique 'As Left' and 'As Found' Interval analysis allows users to easily report on asset performance by analyzing historical data and drift. This flexible tool produces reports to assist calibration managers, tasked with decreasing calibration intervals, to make a qualified recommendation. This reporting and analytical job that used to take a lot of time and resource, can now be done in just minutes without risk of miscalculation or transcription errors.



Equipment Name	Status	Calibration Due
Filter	Select	
DPI620GENII-IS-RP1	In Use	12/12/2018
DPI620GENII-Euro	In Use	16/03/2018
DPI611 20 Bar G	Available	14/10/2018
DPI104 Digital Gauge	Available	14/02/2018
PACE5000 Single Range Pressure Controller	Available	14/06/2018
PACE6000 Dual Range Pressure Controller	Available	03/03/2018
DPI612	Available	14/05/2018
DPI620GENII-IS ATEX Multi Function Electrical Cal.	Available	14/04/2018
PACE1000 Digital Pressure Indicator	Available	14/08/2018
IDOS Auxiliary External Pressure Sensor	Available	11/05/2018
PM620 20 BarG	Available	14/09/2018
Dry Block 650 Degrees C.	Available	14/03/2018
PM620-IS Range 1000 Bar Abs ATEX	Available	14/02/2018

Traceability for Reference Standards

Reference standards used during a calibration are traceable to instruments and work orders. This powerful KPI (Key Performance Indicator) allows managers to prevent and trace issues with required references that are overdue for calibration or for those found to be out of tolerance. Auditors expect a robust system for managing failed references. The "Reference Used Report" quickly displays the list of calibrations associated with the reference, ensuring a speedy investigation and the planning of rework actions.

4Sight2 Calibration and Maintenance software provides a highly flexible information system with the tools for managers to plan, review and adapt the maintenance workflow and for technicians to work efficiently to defined and automated calibration procedures.

4Sight2 – Standard provides portable calibrators and a mobile paperless solution for automating field activity and ensuring the highest quality and integrity of data.

Tablets and mobile devices

4Sight2's mobility and maintenance modules delivers the ability to move to a fully paperless system, automating the process of data collection and deviation handling. The easy-to-use module allows technicians to record maintenance and calibration activities in the field, using hand-held mobile devices like Tablets and Laptops.

The 4Sight2 Calibration Solution is simple to use, cost effective, and scalable for a single user or global multi-site operation

Minimum System Requirements

Applications Server

- Windows Server 2012 R2 (Recommended) / Windows Server 2008 R (all updates fully installed)
- 8 GB-memory (32 GB recommended)
- Quad core processor
- 1 TB memory or greater

Client Workstation

- From Windows 7 (all updates fully installed)
- Google Chrome
- Adobe Reader 8.0+
- 4GB or Greater (8GB recommended)

Standalone PC/Installation

- From Windows 7, 8, and 10 (all updates fully installed)
- Google Chrome
- Adobe Reader 8.0
- 16GB-memory (32 GB recommended)
- Dual Core Processor
- 500 GB or greater disk space

Optional Services

Set-up and Training

Installation help can be offered for the on premise solution, particularly for larger multi-user, multi-site implementation.

Training can be customized for different needs, number of users and number of sites.

Software Maintenance

A software maintenance agreement provides upgrades and support over the term of the agreement.

Ordering Information

Please request a quotation and state the quotation number when ordering. Please advise your requirements as follows:

1. Version type Standard, Advanced or Ultimate
2. Number of concurrent users
3. Number of Plant Tag's
4. Maintenance and Training

For more information please contact your local BHGE representative, or visit: www.druck.ai

Part Numbers

Part Numbers	Description
4SIGHT2-STD	Standard licence CALIBRATION SOFTWARE (3 Concurrent users and 2000 TAGS)
4SIGHT2-MAINT-STD	Standard licence ANNUAL MAINTENANCE
4SIGHT2-ADDT	Standard licence additional 2000 ADDITIONAL TAGS
4SIGHT2-ADDU	Standard licence ADDITIONAL USER LICENCE
4SIGHT2-UNLIM-TAGS	Standard licence UNLIMITED TAGS
4SIGHT2-RTC	Automatic Calibration Option
4SIGHT2-RTC-ADDU	Automatic Calibration Option Additional User
4SIGHT2-MAIN-ADHOC	Standard licence ADHOC HOURLY MAINTENANCE
4SIGHT2-MAINT-ADDU	Standard licence ANNUAL MAINTENANCE ADD'L USER
4SIGHT2-TRAIN-STD	Standard licence TRAINING
4SIGHT2-TL-EXTRA	TRAVEL & LIVING EXPENSES

Support

Technical

E-mail: mstechsupport@bhge.com

Currently supporting Druck DPI range and PACE



DPI 611
Pressure calibrator



DPI 612 series
Pressure calibrator



DPI 620G
Multifunction calibrator



DPI 620G-IS
Multifunction calibrator



Druck PACE series
Pneumatic pressure controllers

4Sight2

Simple, scalable, and smart
Calibration and asset
management software
that works for you

Copyright 2019 Baker Hughes, a GE company, LLC ("BHGE"). Druck and logo are registered trademarks of BHGE in the United States and other countries. All product and company names are trademarks of their respective holders.
920-556A