



4Sight2

Calibration and asset management software

- 4Sight2 is the next generation calibration and asset management software that provides full visibility of all your assets, reference standards and resources on your plant.
- Complete integration with Druck calibration equipment automates field activities and minimizes manual intervention without compromising on quality, compliance and data integrity.
- Automatic workload scheduling and planning, status tracking, configuration capabilities based on individual needs, track and trace calibrations, historical trending and drift analysis features provide a robust solution to drive process efficiency and time saving.
- Easy to use, simple layout packed with customization capabilities offer highly flexible and adaptable solution suitable for a wide range of user groups such as technicians, site supervisors, managers spanning across single or multiple sites or geographies.
- Web browser-based design allows you to access data anytime, anywhere eliminating the need for maintaining and managing paper-based records.

Features

Asset and test equipment management

- Create comprehensive asset and test equipment database
- Create comprehensive factory hierarchy (plant, location, tag, device, range)
- Hierarchical or tabular visualization of data

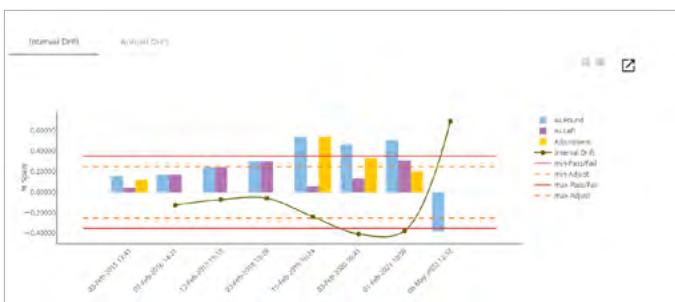
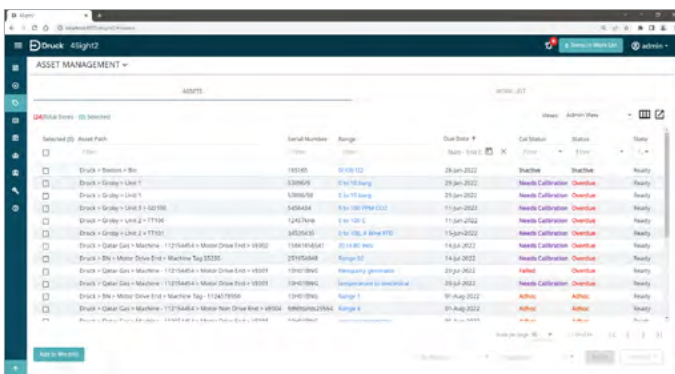
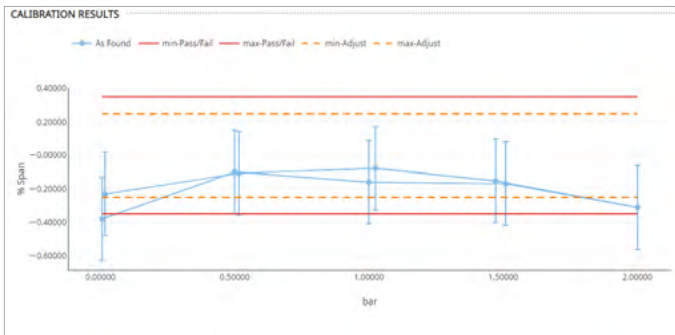
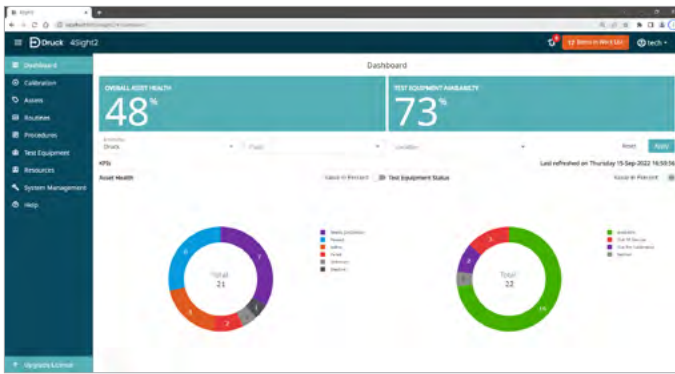
- Customizable data grids
- Export data to standard file formats
- Configuration policies

Calibration & management

- Automates calibration when integrated with the latest Druck workshop or documenting portable pressure, temperature and electrical calibrators
- Digital capture of displayed reading for most Druck indicators & calibrators to enable the automatic closed loop calibration of a Druck calibrator
- Manual entry of calibration data
- Uncertainty calculation for added industry standard compliance
- Easy access to calibration history
- Automatic calibration scheduling and workload management

Reporting and analysis

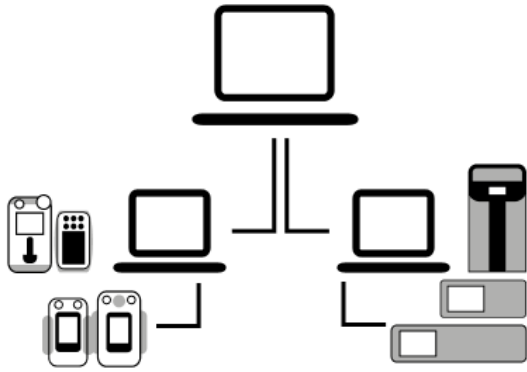
- Customization calibration certificate service
- Reverse trace report for tracing calibrations associated with a reference standard
- Historical trending and drift analysis graph for interval analysis and predictive maintenance



- New **improved look** and **simplified navigation**
 - Improved reference standard **status tracking and management**
 - **Automatic calibration workload scheduling**
 - Improved **communications engine**
 - Quick and easy **express installation**
 - Integrated with Druck temperature calibrator DryTC165/650, LiquidTC165/650 and others
-
- **Uncertainty calculation** provides additional confidence for calibration data in accordance with industry standards
 - The **traceability report** enables speedy investigation of historical calibrations done with a reference standard thereby facilitating corrective actions
-
- **Custom view** feature provides the ability to show/hide, sort, re-order and filter tabular data based on your requirement. Once done, you can save the configuration and **export** the data in standard file format.
 - **Customizable report service** allows you to create bespoke looking certificates using our brand-new reports engine.
 - **User configurable policies** allow you to customize key behaviors.
-
- **Improved visualization** and **data representation** for better decision making
 - **Historical trending** of drift data for interval analysis and predictive decision making
 - Improved **paperless experience** while in field

- New **improved look** and **simplified navigation**
 - Improved reference standard **status tracking and management**
 - **Automatic calibration workload scheduling**
 - Improved **communications engine**
 - Quick and easy **express installation**
 - Integrated with Druck temperature calibrator DryTC165/650, LiquidTC165/650 and others
-
- **Uncertainty calculation** provides additional confidence for calibration data in accordance with industry standards
 - The **traceability report** enables speedy investigation of historical calibrations done with a reference standard thereby facilitating corrective actions
-
- **Custom view** feature provides the ability to show/hide, sort, re-order and filter tabular data based on your requirement. Once done, you can save the configuration and **export** the data in standard file format.
 - **Customizable report service** allows you to create bespoke looking certificates using our brand-new reports engine.
 - **User configurable policies** allow you to customize key behaviors.
-
- **Improved visualization** and **data representation** for better decision making
 - **Historical trending** of drift data for interval analysis and predictive decision making
 - Improved **paperless experience** while in field

Minimum system requirements

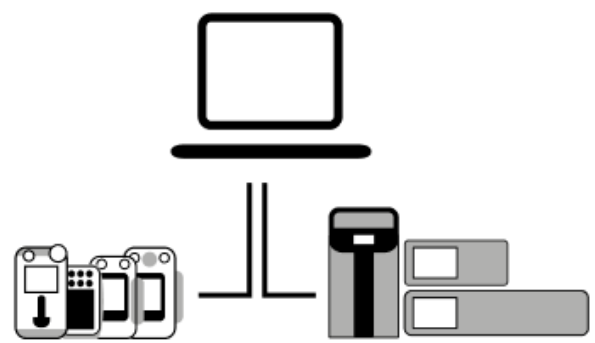


Application server

- Windows 10, Windows Server 2016, Windows Server 2019
- All windows updates fully installed.
- RAM 16 Gb or more (32 Gb Recommended)
- Disk Space 1 Tb or greater
- Processor i3 or higher
- Google Chrome V114+, Microsoft Edge V114+, Firefox V113+

Client workstation

- Windows 10
- Google Chrome V114+, Microsoft Edge V114+, Firefox V113+
- Adobe Acrobat Reader DC Version 2023.003.20201+
- 8GB or greater



Standalone PC/installation

- Windows 10, Windows Server 2016, Windows Server 2019
- All windows updates fully installed.
- RAM 16 Gb or more (32 Gb Recommended)
- Disk Space 1 Tb or greater
- Processor i3 or higher
- Google Chrome V114+, Microsoft Edge V114+, Firefox V113+

Get your copy of 4Sight2



Download

1. Visit [4Sight2 web page](#)
2. Click [download free trial](#) (or Freemium if applicable)
3. Enter contact details
4. Click [download](#)



Install

1. Extract package
2. Execute [4Sight2ExpressSetup.exe](#)



Start using

Launch desktop icon and enjoy!
(for best results use Google Chrome)

For installation queries and other technical support, contact us at, 4sight2techsupport@bakerhughes.com

Flavors and features

Features		Lite as Freemium	Lite	Standard	Advanced
Users	Single user license*	3	3	5	10
Plants or Sites		1	1	1	1
Tags		500	1000	2000	5000
Manual calibration		✓	✓	✓	✓
Portable calibration		✓	✓	✓	✓
Real time pressure calibration		-	-	Either	✓
Real time temperature calibration		-	-		✓
Calibration certificate		✓	✓	✓	✓
Measurement uncertainty calculation		-	-	✓	✓
Configurable global policies		-	-	✓	✓
Customizable layout		-	-	✓	✓
Trend and drift analysis graph		-	-	✓	✓
Graph in the calibration certificate		-	-	✓	✓
Test equipment calibration		✓	✓	✓	✓
Gas calibration		-	-	-	✓
Multi-cycle Real Time Calibration		-	-	-	✓

Note: From September 2022, Lite as freemium is offered free of charge with the "Expert" and "Elite" range Druck portable documenting calibrators.
Licences to use 4Sight2 are issued with the latest revision available at the time of order. Druck reserves the right to charge for any subsequent revision upgrade.

* Single User License means the number of users that can be created in 4Sight2 database and can simultaneously be logged into 4Sight2, for example, in the Lite as Freemium, a maximum of 3 users can be created and all 3 users can simultaneously use 4Sight2.

Part numbers

Part numbers	Description
4SIGHT2-LIT	Lite license, see above for full specifications
4SIGHT2-STD	Standard license, see above for full specifications
4SIGHT2-ADV	Advanced license, see above for full specifications
4SIGHT2-ADDT	Additional 1000 tags
4SIGHT2-ADDU	Additional ONE user license
4SIGHT2-ADDP	Additional ONE Plant or Site License
4SIGHT2-DATA-MIG	Data migration (daily rate for application engineer)
4SIGHT2-REP-TEM	Additional ONE customized calibration certificate
4SIGHT2-MAIN-ADHOC	Ad-hoc hourly maintenance (daily rate for application engineer)
4SIGHT2-TRAIN-STD	Standard training package (daily rate for application engineer)
4SIGHT2-TL-EXTRA	Travel and living expenses for on-site visits
4SIGHT2-LIT-TO-STD	Upgrade from Lite/Lite Freemium to Standard
4SIGHT2-STD-TO-ADV	Upgrade from Standard to Advanced

Note: To upgrade from Lite/Freemium Lite to Advanced order 4SIGHT2-LIT-TO-STD and 4SIGHT2-STD-ADV

Order now

Request a quotation and state the quotation number when ordering.

Advise your requirements as follows:

1. Flavor type [Lite/Standard/Advanced]
2. Any extra add-ons such as Trainings, Additional Users, Tags, etc.



For more information please visit our website: druck.com, or contact your local Druck sales representative.

Related products

Process calibrators

We offer a comprehensive range of portable pressure, temperature and electrical field calibrators. To help you select the right process calibration tools we have categorized our products into three ranges:

- The **Essential** range provides rugged, accurate and easy-to-use test and calibration tools
- The **Expert** range introduces higher accuracy and more functionality
- The **Elite** range provides a modular system offering state-of-the-art multifunction communication and calibration



Laboratory and workshop instruments

Our PACE series offers a comprehensive range of pressure controllers and indicators.

Our Dry/Liquid temperature calibrator range offers and high accuracy solution to temperature calibration measurement.



Pressure transducers and transmitters

We offer a wide range of pressure transducers and transmitters including analog, digital and HART/Smart devices. Please contact Druck for further information.

4Sight2 from Druck

Simple, scalable, and smart

Calibration and asset management software that works for you.



EMEA

sensing.grobycc@bakerhughes.com

Australia

custcare.au@bakerhughes.com

Americas

CCpressureUSA@bakerhughes.com

Rest of the World

sensing.grobycc@bakerhughes.com

4Sight2 Global Technical Support

4Sight2TechSupport@bakerhughes.com



Distributed by:

Eurotron Instruments Benelux B.V.
Vossenkamp 7a
9351 VR Leek, The Netherlands
Tel: +31 594 696 131
E-mail: info@eurotronbenelux.nl
Web: www.eurotronbenelux.nl